

# Young Energy People! - YEP!

July 2010

Newsletter No 4



YOUNG ENERGY PEOPLE

## Contents

Introduction	1
Robinswood Display	1
Pilot School CO <sub>2</sub> reduction results	2
Severn Vale and Rednock Sharing session	2
School Update - Tewkesbury School	2
Energy Surveys 2010	3
YEP! at Maidenhill School	3
Inter-school sharing event	4
YEP! 2010 Energy Quiz	4
YEP! 2011 Roll Out	4

Welcome to the latest YEP! newsletter. Since January 2010 we have been working with the following schools on the current phase of the project:

- Archway School, Stroud
- Bournside School, Cheltenham
- Chosen Hill School, Churchdown
- The Cotswold School, Bourton
- The Crypt School, Gloucester
- Katharine Lady Berkeley's, Wotton
- Laker's School, Coleford
- Maidenhill School, Stonehouse
- Marling School, Stroud
- Newent Community School, Newent
- Pate's Grammar School, Cheltenham
- Ribston Hall High School, Gloucester
- Winchcombe School, Winchcombe
- Whitecross School, Lydney
- Brockworth Enterprise School, Brockworth

Most of these schools have completed their energy surveys and reports and are starting to work towards implementing their action plans and energy saving campaigns. Those teams that have presented their findings and recommendations to governors and Senior Leadership Teams have been positively received, with many head teachers wishing to implement some of the recommended measures as soon as possible!

In addition, our pilot Schools are continuing with their efforts to reduce energy consumption and 'spread the word' to the wider school community (and beyond) through their energy efficiency campaigns. You can see the results of their efforts below and will find out a bit more about one way they have been educating the public in the article overleaf - Read on!

Let's take a look at some of the work the schools have been involved in as we look towards the future and the 2011 phase of the project...

### The results are in!

We are pleased to announce the CO<sub>2</sub> savings that have been made by our pilot schools.

	CO <sub>2</sub> reduction in 2009 against 2008 emissions (tonnes)	Percentage reduction	NB: Accurate data for Rednock and Cleeve is currently unavailable as the footprint (area covered) of these schools has increased since the YEP! Project started and updated figures have not yet been provided.
Farmor's	39.23	9.8	
Stroud High	8.34	1.7	
Severn Vale	70.40	17.28	
Tewkesbury	122.29	14.76	

As you can see, our pilot schools have performed extremely well, achieving an average CO<sub>2</sub> reduction of 10.9%. As a result of the excellent results they have achieved, Severn Vale School were awarded a Sustainable Energy Award - a well deserved reward for all of their hard work!

Nigel Riglar (GCC) presenting Aimee Williams (Senior Project Manager, Severn Vale School) with a Sustainable Energy Award



We are on the Web!

[www.youngenergypeople.com](http://www.youngenergypeople.com)

Intelligent Energy Europe

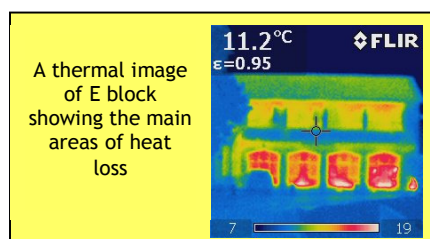
## School Update - Tewkesbury School

Following their achievements as one of the pilot schools on the YEP! Project, Tewkesbury School secured £800,000 funding from the Department for Children, Schools and Families to improve the energy efficiency of their school as part of the Towards Zero Carbon Schools project.

Work at the school has recently begun, with the contractors, Kilbury Construction, making use of the summer holidays to carry out work on three of the older blocks at the school. This work includes flat roof insulation, loft insulation and heating and lighting improvements.

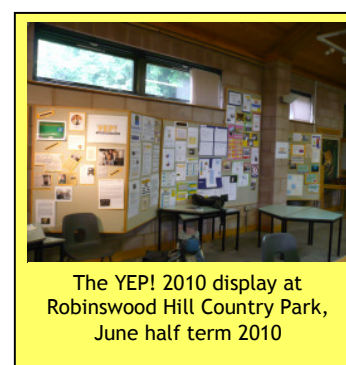
The students on the SEMT will be helping to monitor the effects of this work through their use of the School Energy Diary, having been trained to read the new electricity sub-meters. The impact of the work will be assessed with a view to potentially carrying out similar work in other schools in the future.

The students have also been busy running their energy awareness campaign. New Year 7 students were recruited as 'Energy Detectives' keeping an eye on pupils and staff and reporting back to the Y10 students who have been displaying the best performers and worst offenders when it comes to energy saving behaviour. The SEMT have also put up new displays around the school, developed a YEP web page and written articles for the school newsletter. In addition, the team carried out a thermal imaging survey to find out where E block is losing most heat (see picture below). They hope to repeat this survey when the work is complete to see what difference the building alterations have made - watch this space!



## Robinswood Display

During the June half term, SWEA took the opportunity to showcase the achievements of the pilot schools since the project began back in 2008, setting up a display for visitors to the Gloucestershire Wildlife Trust's headquarters at Robinswood Hill Country Park in Gloucester. This not only provided an opportunity to showcase the work that the schools have been involved in, but also enabled the schools to bring their messages to the wider community. An especially big thank you goes to the SEMTs at Tewkesbury and Severn Vale Schools for helping to put together such a great display! The display was a great success and really captured the essence of what the YEP! project set out to achieve. The materials took pride of place at the exhibit and were seen by many people throughout the week.



## Severn Vale and Rednock SEMT sharing session - A pupil's perspective

On Friday 7<sup>th</sup> May the YEP committee of Severn Vale came to Rednock School to discuss how we had saved energy and how we hoped to save more in the future.

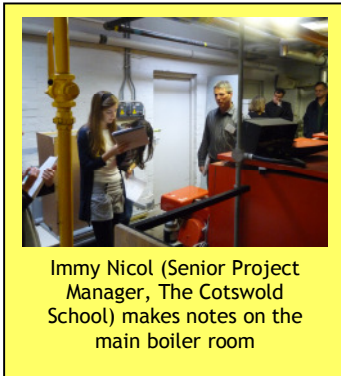
We started off by discussing our individual carbon footprints before splitting into two groups to go around Rednock school highlighting energy saving features as well as areas where improvement is required. The new Rednock School has many excellent facilities particularly when it comes to IT.

However, this does mean we are using a lot of electricity and we would like to reduce this to decrease our Carbon Dioxide emissions as well as save money!

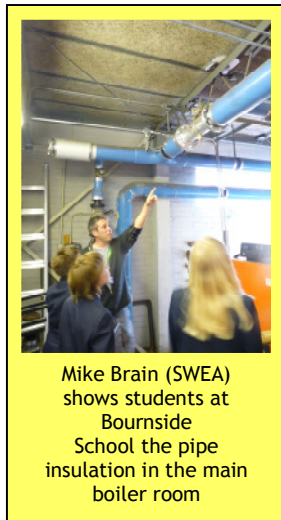
After the tour, Severn Vale showed us a video they made about how they had saved energy and how what they had done had affected their school. We all thought that Severn Vale had done a really good job and had some great ideas.

Soon it was time to say goodbye to Severn Vale but the Rednock committee all felt that the meeting had been a success and would help both schools become more energy efficient.

Georgia Butterfield  
Marketing Team, Rednock.



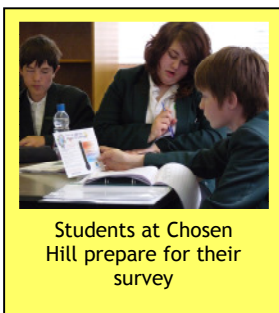
Immy Nicol (Senior Project Manager, The Cotswold School) makes notes on the main boiler room



Mike Brain (SWEA) shows students at Bournside School the pipe insulation in the main boiler room

### Energy Surveys 2010

Most of the YEP 2010 schools have now completed their energy surveys and have formulated their findings into a comprehensive School Energy Report. It has been interesting to see the similarities and differences in their findings and it is fair to say that all of our schools have performed well in identifying the priority actions for their particular school. These SEMTs are now working on developing a presentation to governors and school staff informing them of their main findings and outlining recommendations to improve the energy efficiency of the school. Well done to students from Maidenhill, Marling, the Crypt, Chosen Hill, Pates and Bournside schools who have already presented their findings, which have been well received by governors and senior staff at their schools.



Students at Chosen Hill prepare for their survey



Students at KLB share their findings

### YEP at Maidenhill School

The following article has been written by the SEMT at Maidenhill School;

*YEP, stands for young Energy People. Our job is to save energy around the school.  
Our Energy Team is: Rebekah Teixeira- Energy Team Manager, Leanne Woods- Marketing Manager, Eve Uzzell- Project Manager, Jess Jones- IT Manager.*

*Natasha is our project supervisor; her job is to train us into a 'School Energy Management Team' teaching us the basic skills of surveying the energy situation and instigating a programme of improvements on the basis of our observations.*



*At the moment our school has the worst rating (G) on the energy rating chart. To improve this, we need to install double glazing and further insulation in the roof and walls. We also need to reduce the amount of energy that is wasted when not needed, like leaving on the lights when no one is in a room.*

*We looked at the bills of our school from October 2008 - September 2009. This showed we spent £28,826 on electricity. We need to reduce this total amount and even in August when we're not in school energy is still being wasted, so we need to find the reason for this and stop it.*

*We enjoy going to YEP! meetings, because we are learning a lot, and are able to have a positive input on how the school can improve and change. It is also good to know that what we are doing is successful and will help reduce the amount of CO<sub>2</sub> released into the atmosphere, helping cut back on global warming.*



Maidenhill SEMT

## YEP! 2010 Inter-School Guest Speaker and Sharing Event

On Friday 25<sup>th</sup> June, 8 members of the Katharine Lady Berkeley School Energy Management Team (SEMT) took part in a two hour inter-school sharing event hosted by the SEMT at Chosen Hill School, Churchdown.

The event saw Matt Thames, Project Manager at Magnox North deliver an informative presentation about his role as Project Manager in the nuclear power industry. The presentation generated interesting discussions from the students in years 7, 8 & 9 who asked probing questions such as 'what alternative options are there for disposing of nuclear waste?' and 'when Oldbury power station is decommissioned what will be the impact in terms of employment?' Esme Wardhaugh (Year 9, Chosen Hill) said "it was a very good talk and opened up a whole range of horizons".

Following the talk, the students presented their findings and compared the similarities between their schools, before jointly planning a series of energy awareness days. Julie Parsons, Teacher at Chosen Hill School, said "it was great to see how the two schools face similar issues in terms of energy consumption and we look forward to working with KLB in the future".

The teams will now work to set targets to reduce energy consumption in their school through the launching of an energy efficiency campaign during the next academic year.



Pictured: Matt Thames (Magnox North) pictured back left with students from Chosen Hill and Katharine Lady Berkeley's School Energy Management Teams.

## Battle to become the 2010 Young Energy People Energy Quiz Champions.

A big thank you to Pate's Grammar School for hosting the YEP! 2010 Inter-school Energy Quiz, which saw students from Chosen Hill, Ribston Hall, Winchcombe, Newent Community School and Pate's Grammar School go head to head in an exciting game show style event, in a bid to become the 2010 Energy Quiz Champions.

Four students from each school represented their School Energy Management Team to answer a variety of challenging questions relating to the current energy performance of their school, renewable energy sources, global energy issues and job roles in the energy sector.

Winchcombe took an early lead - scoring full marks in round one by correctly ranking a variety of electrical appliances in order of highest to lowest energy consumption. Chosen Hill and Ribston Hall proved just how well they knew their school by coming joint first in the school specific round, with Newent and Pate's scoring full marks on questions relating to global energy issues.

It was a close contest but in round 6 Winchcombe and Pate's stormed into the lead, earning themselves a place in the final 'on the buzzer' round. An incorrect answer from Winchcombe gave Pate's the advantage as they went on to answer their questions correctly and win the contest! Gloucestershire County Council's Keith Lane (Senior Access Commissioning Manager) and Peter Wiggins (Corporate Sustainability Manager) presented the winning team with the Energy Quiz Champions certificate and a selection of energy saving gadgets.

The quiz highlighted just how much the students have learnt from participating in YEP! so far and we look forward to working with them as they use these newly-acquired skills to launch their energy saving campaigns.



Students from the winning team alongside Keith Lane and Peter Wiggins from GCC

## Looking ahead - YEP 2011

SWEA are pleased to announce that they are now looking for a further 8 schools to work on the next phase of the project beginning in September 2010. Having seen the enormous impact that the project has had in both the pilot and YEP 2010 schools, we are very much looking forward to working with these schools into 2011. To find out more or to register your interest in taking part, contact the education team on: 01452 835060. Alternatively, visit our website at: [www.swea.co.uk/proj\\_YEP2010.shtml](http://www.swea.co.uk/proj_YEP2010.shtml)

We are on the Web!

[www.youngenergypeople.com](http://www.youngenergypeople.com)

Intelligent Energy  Europe